



## The Payette 2,497 square feet

The Payette River, one of Idaho's iconic fisheries, flows 175 miles from its headwaters 10,000 feet up in the Sawtooth Range. Its South Fork supports wild rainbow trout and famous whitewater runs.

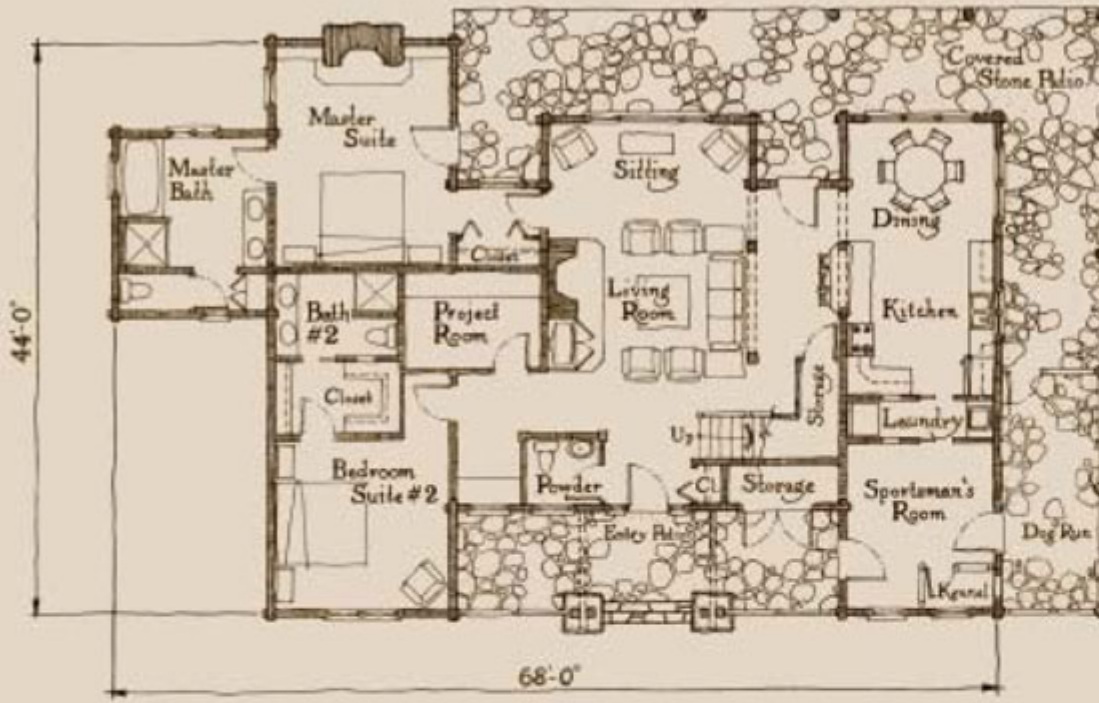


**ORVIS**  
SPORTING TRADITIONS  
Since 1898  
**LOG HOMES**

© 2005 Rocky Mountain Log Homes

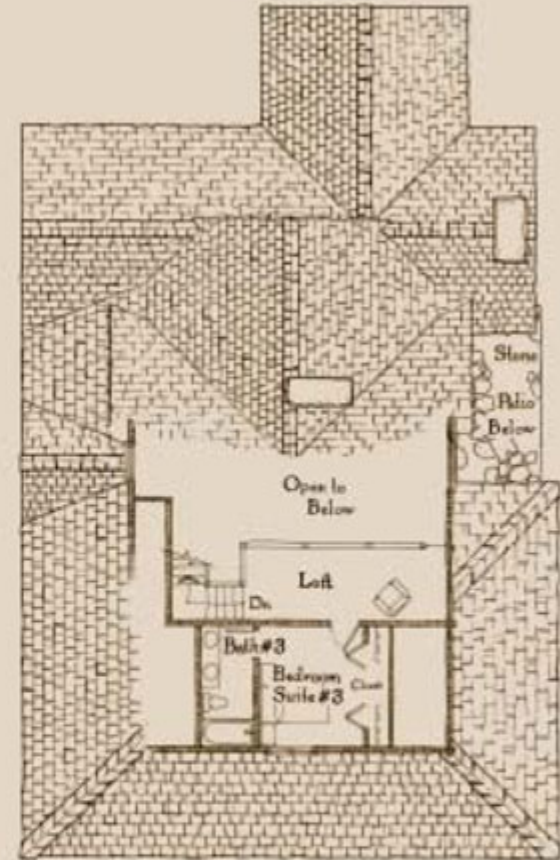


# THE PAYETTE



**MAIN LEVEL FLOOR PLAN**

The Payette brings together the best of log construction, the cabin feel, and the traditional style of homes of the Eastern United States. A large fireplace warms the open living room and upstairs bedroom; behind it, two bedroom suites are nicely separated from the family space. The dining and kitchen areas share space, making them both a comfortable gathering area. Great front and back porches provide for mornings and afternoons, taking in your surroundings.



**LOFT FLOOR PLAN**



From Rocky Mountain Log Homes. Visit [www.orvisloghomes.com](http://www.orvisloghomes.com), or call Rocky Mountain Log Homes at 866/363-5680.

