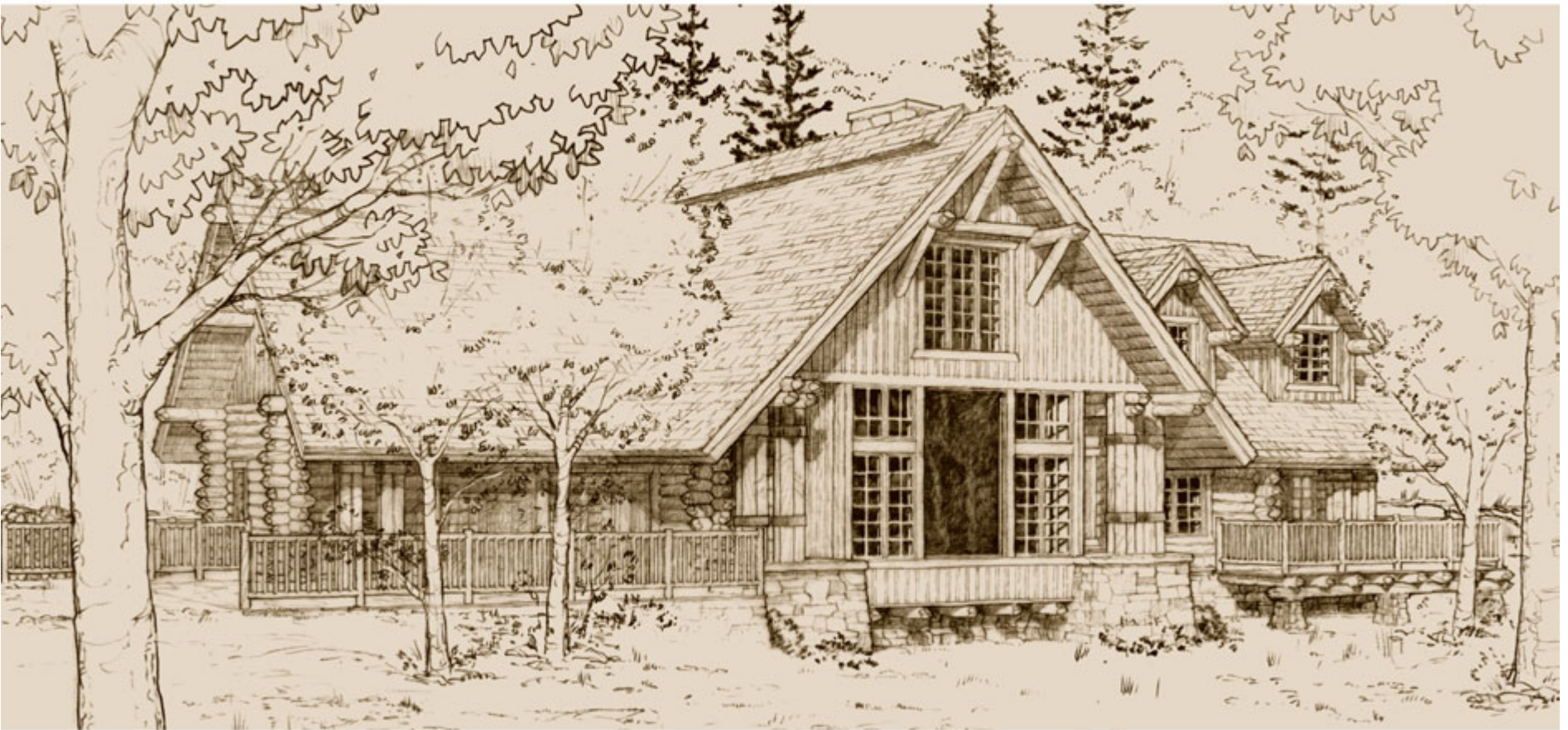




The Yellowstone 2,894 square feet

The Yellowstone River is our nation's longest free-flowing waterway. Along 670 miles from the world's first National Park, through Wyoming and Montana, it sustains thousands of trout fisheries.

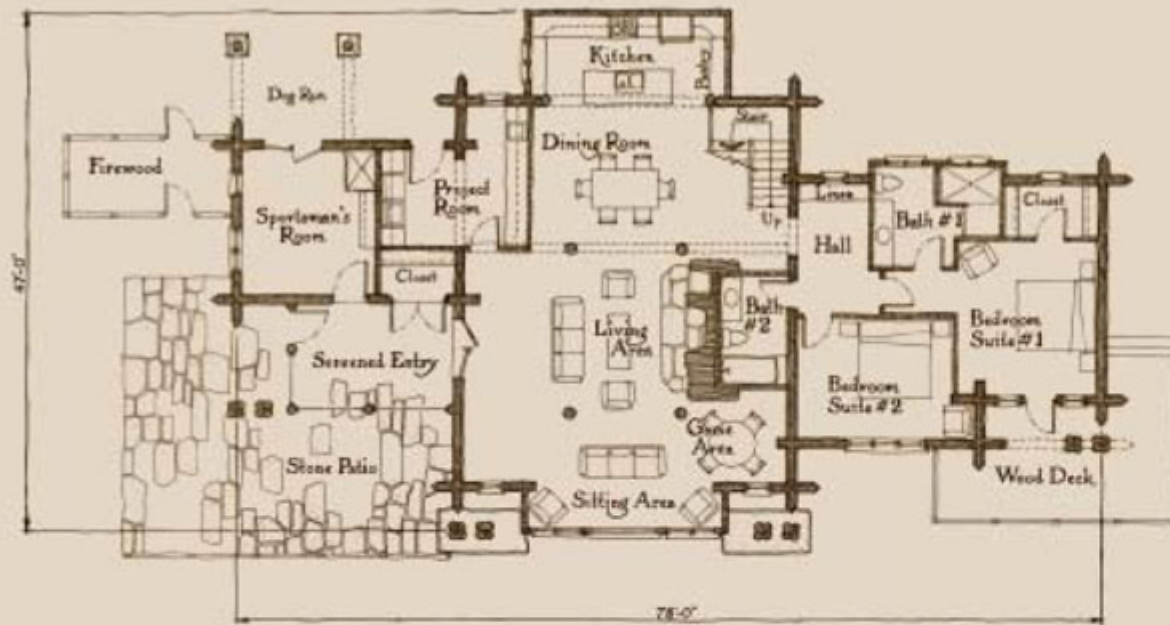


ORVIS
SPORTING TRADITIONS
Since 1896
LOG HOMES

© 2005 Rocky Mountain Log Homes



THE YELLOWSTONE



MAIN LEVEL FLOOR PLAN

The Yellowstone is a mid-sized plan, and among the most versatile of the Orvis Log Homes. It's a traditional, open floor plan for family gathering, with an intimate cabin feel. The Sportsman's Room, located near the porch entry, is integral to the family's comings and goings, for easy pre- and post-activity needs. The main living area is large enough for families, and small enough for an evening by the fire or a warm holiday morning. A loft-type bedroom suite may be closed off from the living area with large double barn doors, providing a cozy bedroom environment. Two bedrooms on the Yellowstone's lower level, and two more on the upper level, afford plenty of privacy.



UPPER LEVEL FLOOR PLAN